



Apartment Features*

- Spacious 3 and 4 bedroom homes
- Washer and dryer in every home
- Fully equipped kitchens with pantry
- Vaulted ceiling in living room
- Ceiling fans

Silver Leaf Estates has all the elements of a great lifestyle at an affordable price. Here, you'll find a tradition of excellence in everything from our impeccable service to our quality construction. Our spacious homes reflect timeless elements of style and are designed with the comfort and convenience you desire.



Community Amenities

- Covered carport
- Outside storage
- Spacious lots with front and back yards
- Playground
- Community Room
- 24-Hour Emergency Maintenance
- Professional On-Site Leasing Office / Manager

4705 Natchez Street
Alexandria, LA 71302

(318) 445-3530
(318) 449-3665 Fax



SilverAlexandria.com

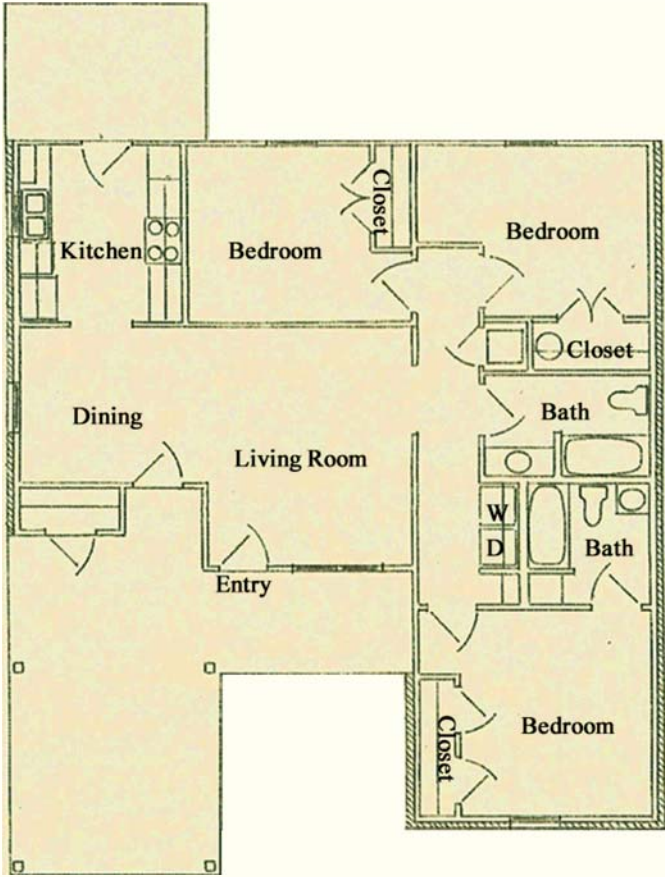
*Availability may be limited to select apartments only. Subject to change with out notice.



(318) 445-3530

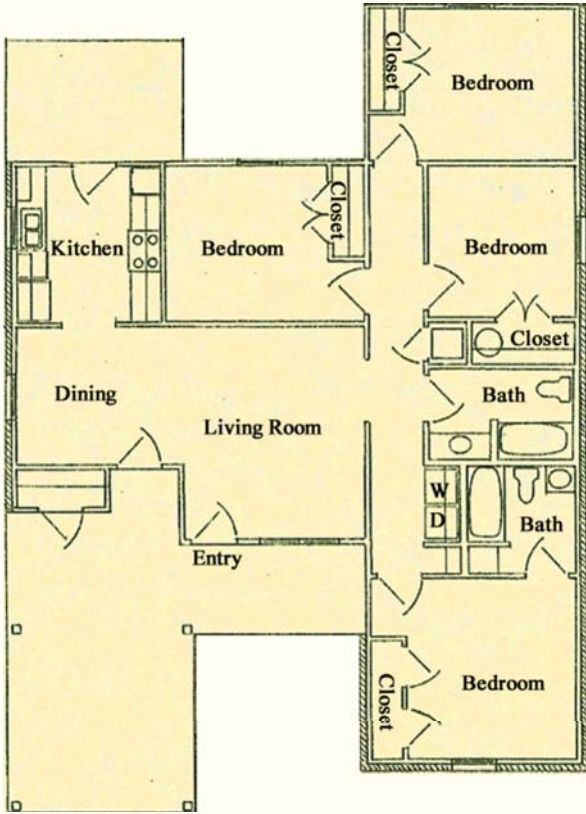
3 Bedroom / 2 Bath
1,492 Sq. Ft.*

RENT _____
DEPOSIT _____



4 Bedroom / 2 Bath
1,722 Sq. Ft.*

RENT _____
DEPOSIT _____



Come discover the peaceful, private, and exciting Silver Leaf Estates, where southern charm and grace welcome you, and distinctive style surrounds you.



*Square footage is approximate Actual floorplans may vary

4705 Natchez Street
Alexandria, LA 71302

(318) 445-3530
(318) 449-3665 Fax